

<b>Product</b>	–	Automatic Die Cutting Machine with Stripping (Tiptronic Feeder)
<b>Model</b>	–	MHC-1100EC
<b>Warranty</b>	–	2 Years



Please Note that the picture is for **ILLUSTRATION ONLY** and may vary from the equipment offered.

## Processed Material:



## Features:

- 1) CE Approved
- 2) Center Line Systems
- 3) Three Side Stripping System
- 4) Not-Stop Collecting Device
- 5) Human Machine Interface
- 6) Wide Stock Range for Corrugated Board and Card Paper
- 7) Photoelectrical Device for Safe Operation
- 8) High Speed and Precision Feeder Equipped
- 9) ISO: 9001 and CE Approved Manufacturing Process
- 10) European, Taiwan and Japanese Standard Spare Parts

## Mechanical Configuration:

S. No.	Features	Include	Qty.	Worth INR
1	Operation Platform	Y	1 No.	
2	Die Chase (One is installed in Machine; the other is packed in accessory box)	Y	2 Nos.	
3	5 + 2mm Sandwich Plate (2mm Cutting Plate Made in Germany)	Y	1 No.	
4	Spare Gripper Bar	Y	1 No.	
5	Gripper Bar Safety Lock	Y	1 No.	
6	Set of Tools	Y	1 No.	
7	Optional Extra Die Chase	N	1 No.	1,15,000/-
8	Optional Extra 5mm Hardened Die Cutting Plate from Germany	N	1 No.	85,000/-
9	Optional Extra 2mm Hardened Die Cutting Plate from Germany	N	1 No.	9,800/-
10	Optional Extra 2mm Hardened Die Cutting Plate from China	N	1 No.	5,000/-
11	Optional Extra Gripper Bar Assembly with Connectors	N	1 No.	56,500/-
12	Optional Stripping Waste Basket	N	1 No.	29,500/-
13	Optional Speed Display	N	1 No.	50,000/-
14	Optional Tape Inserter (Including 8 Tapes)	N	1 No.	49,800/-
15	Optional PLC Remote Controller (For Software Upgrade and Maintenance)	N	1 No.	1,50,000/-
16	Optional Die Chase Loader (Without Die Chase) - For Pre-Make Ready of Next Job	N	1 No.	6,18,750/-

## Technical Specifications:

Max. Sheet Size	1100 X 790 mm
Min. Sheet Size	450 X 350 mm
Max. Cutting Size (7mm Plate)	1070 X 770 mm
Max. Cutting Size (2mm Plate)	1040 X 740 mm
Min. Gripper Margin	10-17 mm
Stock Range	160~600 GSM (Card Paper)
	≥ 5mm (Corrugated Paper)
Die Cutting Accuracy	± 0.1 mm
Max. Cutting Pressure	300 Tons
Machine Speed	7000 sheets/hour
Feeder Pile Height	1600 mm (including wooden pallet)
Delivery Pile Height	1400 mm (including wooden pallet)
Main Motor Power	11 Kw
Total Power Required	17 Kw
Air Pump Displacement	0.6~0.7Mpa, ≥0.37m <sup>3</sup> /min
Total Weight of Machine	17 Tons
Machine Dimensions (Length: including Pre-Feeding Track) (width: Including the Pedal)	9500X 3959 X 2309 mm

## **Feeder Section:**

- 1) Three lifting and four forwarding sucker heads with angle adjustment to handle different kinds of materials.
- 2) Preloading device with rail cart and scaled gate.
- 3) Automatic side adjustment of pallet table.
- 4) Non-stop feeder with automatic pile lift.
- 5) Side blowers adjustable according to sheet size for smooth feeding, especially for thin paper.



## **Feeding Table:**

- 1) Left and right-side push lays to ensure accurate alignment and power registration.
- 2) Synchronizing device to adjust the sheet positioning to the front lay by hand during production.
- 3) Feed table inlet equipped with lateral ramps.
- 4) Four individually adjustable front lays at the operation side of the machine.
- 5) Electrical mechanical double sheet detector.
- 6) Sheet hold-down device (guiding the sheets to the front lays).
- 7) Pull and push convertible side lays (OS and OOS) with photo sensor sheet arrival control.



## **Die-Cutting Section:**

- 1) Precision worm gear crank toggle driving system to ensure smooth and dynamic lower plate movement.
- 2) Precision stationary upper platen.
- 3) Centerline system and pneumatic lock-up system for quick cutting die set up and job changeover.
- 4) Motorized cutting force setting by pushbutton.
- 5) Cam indexer and heavy-duty pneumatic clutch with overload protection for stable, accurate and safe machine running.



## Stripping Section:

- 1) Complete set of stripping tools with upper and lower stripping pins
- 2) Motorized upper frame suspending hoister
- 3) Upper and lower stripping tool mounting frame can be pulled out for job set up and make ready.
- 4) Three side stripping function.



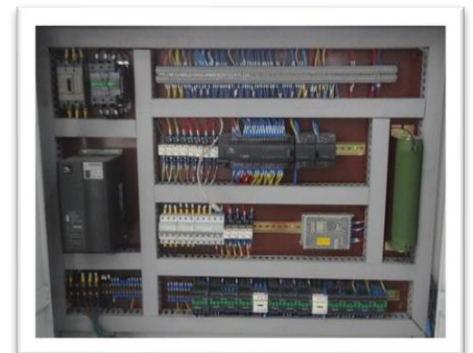
## Delivery Section:

- 1) Manual Non-stop delivery system.
- 2) Air blower to press down the sheets
- 3) Delivery control panel with icons for easy operation.
- 4) Photoelectric device for safe operation and entrance.
- 5) Safety device to prevent the steel pile plate from clamping on the foot when it reaches at ground level.
- 6) Rear and side joggers with easy position adjustment.



## Electrical Control Section:

- 1) Adopts electrical components of world-famous brands for better performance and in time and local after-sale-service and maintenance.
- 2) Huichuan latest PLC technology to ensure safe and trouble-free running





## Main Machine Parts:

NO.	MAIN PARTS	BRAND	COUNTRY(REGION)
1	Main Motor	SIEMENS	Germany
2	Man-Machine Interface	SIEMENS	Germany
3	Chip	SIEMENS	Germany
4	Control Centre	SIEMENS	Germany
5	Program Controller	SIEMENS	Germany
6	Inverter	SIEMENS	Germany
7	Cutting Plate	5 +2 mm HIGH ALLOY PLATE	Germany
8	Vacuum Pump	BECKER	Germany
9	Intermittent Segmentation	HANDEX	Taiwan
10	Rotary Joint	OMPI	Italy
11	Electromagnetic Clutch	OMPI	Italy
12	Electromagnetic Gear Clutch	OMPI	Italy
13	Crankshaft Material	Ni-Cr-Mo METAL STEEL	Germany
14	Main Drive Chain	IWIS	Germany
15	Secondary Chain	TSUBAKIMOTO	Japan
16	Grip Bar, Gripper	KUI	Japan
17	Indicator Light	MOELLER/EATON	Germany
18	Circuit Breaker	MOELLER/EATON	Germany
19	Safety Relay	MOELLER/EATON	Germany
20	Security Module	MOELLER/EATON	Germany
21	Button	MOELLER/EATON	Germany
22	Motor Protector	MOELLER/EATON	Germany
23	Magnetic Switch	MOELLER/EATON	Germany
24	AC Contactor	MOELLER/EATON	Germany
25	Button	MOELLER/EATON	Germany
26	Relay	MOELLER/EATON	Germany
27	Photoelectric Switch	OMRON	Japan
28	Relay Seat	OMRON	Japan
29	Proximity Switch	OMRON	Japan
30	Encoder	OMRON	Japan
31	Sensor	OMRON	Japan
32	Bearing	NSK	Japan
33	Cable	TKD	Germany
34	Air Cylinder	AIRTAC	Taiwan



# ROBUS INDIA INDUSTRIES PVT LTD

robustindia.com

GST IN.: 09AAKCR4872J1ZQ

CIN No- U29300UP2020PTC135617

info@robustindia.com

<b>35</b>	Air Volume Regulator	SMC	Japan
<b>36</b>	Main Solenoid Valve	SMC	Japan
<b>37</b>	Linear Guide	ABBA	Taiwan
<b>38</b>	Worm and Gear	WANCENG	Taiwan
<b>39</b>	Wallboard and Machine Body Structure	QT500-7 nodular cast iron	China
<b>40</b>	Feeder	YONGCHUAN	Taiwan
<b>41</b>	Main Paper Feeding Motor	CHENGBANG	Taiwan
<b>42</b>	Lift Motor of Paper Collecting Platform	CHENGBANG	Taiwan



## Current Product Range Covers

### BHT Model (Most Advance Series)

1. Automatic Die Cutting Machine with Four Side Stripping, Heating System and 600 Tons Cutting Pressure  
BHT-1060/1060A/1060AR/1060CE/1060ACE/1060ACER/1060SCE  
/1060ASCER

### MHK Model (Efficient Series)

1. Automatic Die Cutting Machine with Four Side Stripping  
MHK-820/820CE/MHK-1050/1050CE
2. Automatic Die Cutting & Hot Stamping Machine  
MHK-820T/1050AT
3. Automatic Die Cutting & Hot Stamping Machine with Four Side Stripping  
MHK-/820TC/1050ATC
4. Automatic Lead Edge Feeding Die Cutting Machine with Four Side Stripping  
MHK-1300FC/1500FC/1650FC/1900FC
5. Automatic Bottom Feeding Die Cutting Machine with Four Side Stripping  
MHK-1300EFC/1500EFC/1650EFC/1900EFC
6. Auto-Manual Die Cutting Machine with Four Side Stripping (Top Feeding)  
MHK-1300EC/1500EC/1650EC/1900EC
7. Duo Press Automatic Die Cutting Machine with Double Station  
MHK-2S1050RMC/2S1050TMC/2S1050TRC/2S1050TTC
8. Trio Press Automatic Die Cutting Machine with Triple Station  
MHK-3S1050TRMC/3S1050TTMC/3S1050TTTC

## MHC Model (Economical Series)

1. Automatic Die Cutting Machine (Top Feeder)  
MHC-820/1060
2. Automatic Die Cutting Machine with Three Side Stripping (Top Feeder)  
MHC-820CE/1060CE
3. Automatic Die Cutting & Hot Stamping Machine (Top Feeder)  
MHC-820T/1060AT
4. Automatic Die Cutting & Hot Stamping Machine with Three Side Stripping  
(Top Feeder)  
MHC-820TC/1060ATC
5. Automatic Lead Edge Feeding Die Cutting Machine  
MHC-1300F/1500F/1650F/1900F
6. Automatic Lead Edge Feeding Die Cutting Machine with Three Side  
Stripping  
MHC-1300FC/1500FC/1650FC/1900FC
7. Automatic Bottom Feeder Die Cutting Machine  
MHC-1300EF/1500EF/1650EF/1900EF
8. Automatic Bottom Feeder Die Cutting Machine with Three Side Stripping  
MHC-1300EFC/1500EFC/1650EFC/1900EFC
9. Automatic Die Cutting Machine (Tiptronic Feeder)  
MHC-1100E/1300E/1500E/1650E/1900E
10. Automatic Die Cutting Machine with Three Side Stripping (Tiptronic  
Feeder)  
MHC-1100EC/1300EC/1500EC/1650EC/1900EC
11. Semi-Automatic Die Cutting Machine  
MHC-1100B/1300B/1500B/1650B/1900B
12. Semi-Automatic Die Cutting Machine with Three Side Stripping  
MHC-1100BC/1300BC/1500BC/1650BC/1900BC

13. Semi-Automatic Die Cutting Machine with Feeding Table  
MHC-1100BL/1300BL/1500BL/1650BL/1900BL

14. Semi-Automatic Die Cutting Machine with Feeding Table & Three  
Side Stripping  
MHC-1100BLC/1300BLC/1500BLC/1650BLC/1900BLC

## **Company Introduction:**

Zhejiang Dayuan Machinery Co., Ltd. (Origin Ruian Ruiyang Printing Machinery Co., Ltd.) is headquartered in No.105, Haize Road, Binhai New Area, Pingyang county, Wenzhou city, covering an area of over 40000 square meters and construction area of over 80000 square meters.

Founded in 1999, Dayuan now owns modern production facilities and over 400 employees with annual production capacity of 600 sets.

At Dayuan, we are proud that every machine has been under manufacturing in strict accordance with ISO9001 Quality Management System and CE Standards. There are over 3000 machines running in 30 countries, such as UK, Spain, Egypt, Saudi Arabia, Poland, Czech, Russia, South Africa, Brazil, Argentina and etc.

Since started the partnership with world leading packaging companies of European, Asian, Middle East, North & South America companies, Dayuan will continually satisfy our customers by offering high quality machines and first-class service.

## **Factory:**



## Workshop:

